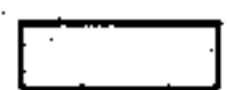


911-2906908 ★

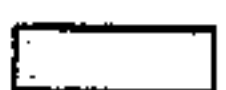
CYLINDER GROUP, STEERING  
E 05/20/77

ITEM	PART NO.	QUAN.	DESCRIPTION
1	G746	2	BEARING
2	-1156	4	RING, SNAP
3	P1FG	2	FITTING, GREASE
4	†8GG16	4	SCREW, CAP
5	VRM616 ★	1	CYLINDER ASSEMBLY
6	016-99040	2	PLATE, LOCK
7	911-99005	1	PIN ASSEMBLY
8	912-99007	4	SPACER
9	VU8F6E02BS	2	ELBOW
10	0003384	1	PIN ASSEMBLY

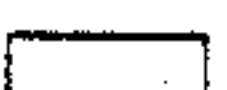
LEGEND:



SOLD ONLY AS AN  
ASSEMBLED UNIT



SOLD ONLY AS A KIT  
OR MATCHED SET



SOLD AS AN ASSEMBLED UNIT.  
SERVICEABLE PARTS OF THIS ASSEMBLY ARE SHOWN  
SEPARATELY UNDER THE ASSEMBLY NUMBER.



NOT SOLD AS AN ASSEMBLED UNIT.  
SERVICEABLE PARTS OF THIS ASSEMBLY ARE SHOWN  
SEPARATELY UNDER THE ASSEMBLY NUMBER.

**GIVE MACHINE SERIAL NUMBER WHEN ORDERING PARTS**

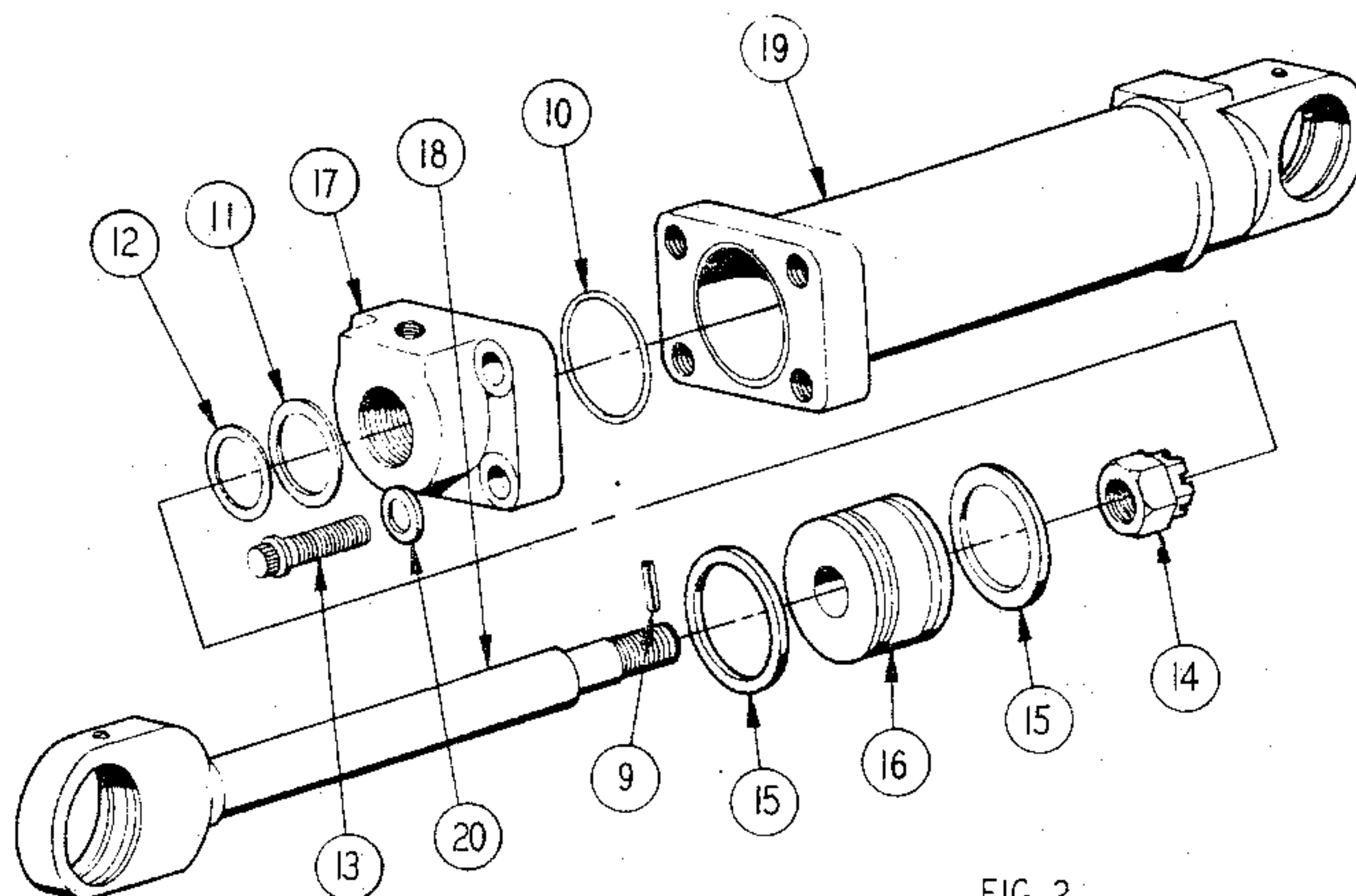


FIG. 2

**VRM616 \***  
**CYLINDER ASSEMBLY**  
**01-03-72**

ITEM	PART NO.	QUAN.	ITEMS SHOWN IN FIG. 2	DESCRIPTION
9	K228	1		PIN, ROLL
10	S2820	1		O-RING
11	S3610	1		SEAL
12	S3613	1		WIPER
13	T10HF32	4		SCREW, CAP
14	T20HY	1		NUT
15	VRA98	2		RING, PISTON
16	VRB623	1		PISTON
17	VRC618	1		GLAND
18	VRM619	1		ROD ASSEMBLY
19	VRM625	1		TUBE ASSEMBLY, COMPLETE
20	WA44	4		WASHER
--	VRM703 K	1		SEAL KIT (INCLUDES ITEMS 10, 11, 12 & 15)

## LEGEND:

SOLD ONLY AS AN  
ASSEMBLED UNIT

K SOLD ONLY AS A KIT  
OR MATCHED SET

\* SOLD AS AN ASSEMBLED UNIT.  
SERVICEABLE PARTS OF THIS ASSEMBLY ARE SHOWN  
SEPARATELY UNDER THE ASSEMBLY NUMBER

\* NOT SOLD AS AN ASSEMBLED UNIT.  
SERVICEABLE PARTS OF THIS ASSEMBLY ARE SHOWN  
SEPARATELY UNDER THE ASSEMBLY NUMBER.

**GIVE MACHINE SERIAL NUMBER WHEN ORDERING PARTS**